

DCX-PCI300 Motion Controller Quick Start Card

Step 1 – Get familiar with the

DCX-PCI300. Open the **Introduction and Installation Guide.** Put PMC's **MotionCD** into the CD reader of a Windows PC. Select:

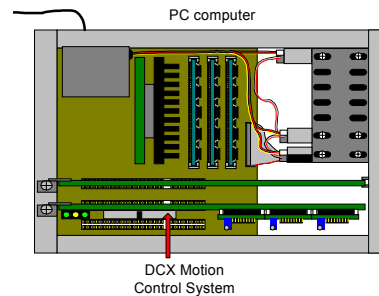
Software & Manuals\PCI Bus Controllers\DCX-PCI300\
User's Manuals\Introduction and Installation Guide

Select **View** to open the document.



Step 2 – Install the DCX-PCI300.

With the PC turned off, install the DCX-PCI300 into an available PCI slot. Power up the computer. Windows 'plug and play' (except NT4) will recognize the new PCI card. The Windows New Hardware Wizard will help you install the DCX-PCI300 device driver. For details refer to **Chapter 2** of the **Introduction and Installation Guide.**



Step 3 – Install PMC's Motion

Control API. From the **MotionCD** select:

Software & Manuals\PCI Bus Controllers\DCX-PCI300\
Motion Control API\Install Motion Control

Complete installation by restarting the computer. For details please refer to **Chapter 2** of the **Introduction and Installation Guide.**



Step 4 – Install PMC's Motion

Integrator program (rev. 1.2 or higher). From the **MotionCD** select:

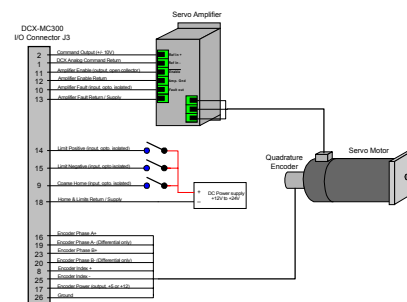
Software & Manuals\PCI Bus Controllers\DCX-PCI300\
Motion Integrator\Install Motion Integrator

For details please refer to **Chapter 2** of the **Introduction and Installation Guide.**



Step 5 – Install and wire the DCX

Motion Modules to the 'outside world'. For details refer to **Chapter 3** (for jumpering and wiring examples) and **Chapter 6** (signal descriptions, pinouts, schematics) of the **Introduction and Installation Guide.**

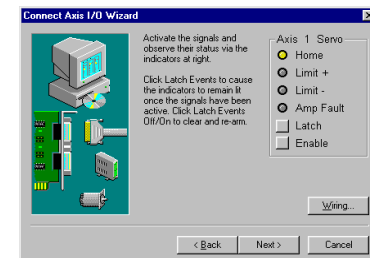


Step 6 – Use Motion Integrator to

verify operation of the DCX-PCI300 and external devices. Launch **Motion Integrator**:

Start\Programs\Motion Control\Motion Integrator\
Motion System Setup

For details refer to **Chapter 4** of the **Introduction and Installation Guide** and **Chapters 5 & 6** of the **DCX-PCI300 User's Manual.**



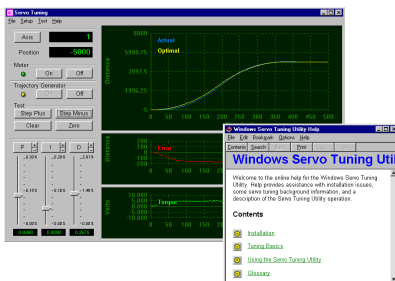
Continued on the back side

DCX-PCI300 Motion Controller Quick Start Card (continued)

Step 7 – Optimize the performance of servo systems. Launch Servo Tuning:

Start\Programs\Motion Control\Motion Integrator\Servo Tuning

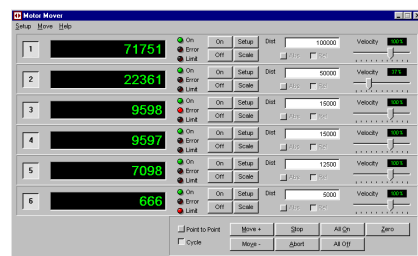
For details refer to **Chapter 5** of the **DCX-PCI300 User's Manual** and/or the **Servo Tuning Primer** and **Servo Tuning Tutorial PowerPoint Presentations** on the Motion CD.



Step 8 – Exercise the axes (servo and steppers) using PMC's Motor Mover.

Start\Programs\Motion Control\Motion Integrator\Motor Mover

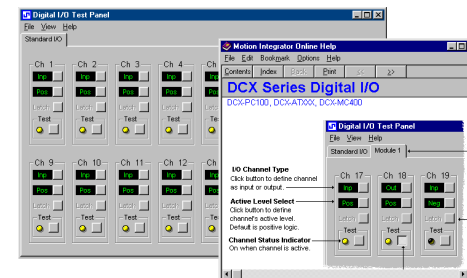
Execute: moves for one, a few, or all axes, on the fly velocity changes, multi-axes cycling. For details refer to **Chapter 5** of the **DCX-PCI300 User's Manual**.



Step 9 – Configure and exercise general purpose digital I/O.

Start\Programs\Motion Control\Motion Integrator\Digital Config.

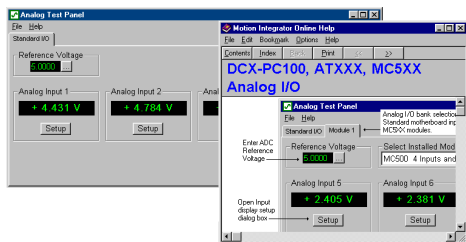
For details please refer to **Chapter 7** of the **DCX-PCI300 User's Manual** and **Motion Integrators Digital Configuration on-line help**.



Step 10 – Configure and exercise general purpose analog I/O.

Start\Programs\Motion Control\Motion Integrator\Analog Config.

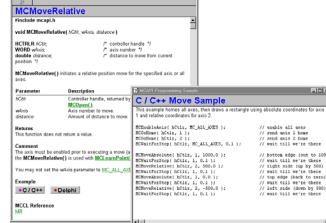
For details please refer to **Chapter 7** of the **DCX-PCI300 User's Manual** and the **Motion Integrators Analog Configuration on-line help**.



Step 11 – The Motion Control API (MCAPI) provides a powerful function Library for C/C++, VisualBasic, and Delphi programming. An on-line function reference is available from the Start Menu:

Start\Programs\Motion Control\Motion Control API\ MCAPI Reference

or from the **MCAPI Reference Manual** on the **MotionCD**.



Step 12 – PMC is second to none in its dedication to technical support. The most recent software and controller firmware is available for downloading from our web site www.pmccorp.com. Email questions via our web site, or call to speak directly with a certified tech support engineer.



www.pmccorp.com
support@pmccorp.com
 phone: (760) 930-0101