

**Title:** Multiple “Insert Disk” Prompts During Windows 98 Install  
**Products(s):** Motion Control API (MCAPI)  
**Keywords:** MCAPI, Windows 98, installation  
**ID#:** TN1053  
**Date:** March 3, 2004

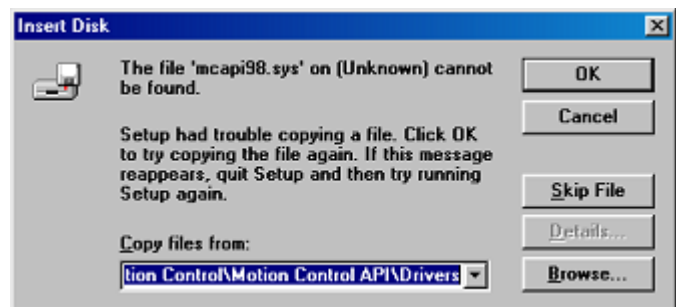
---

## Summary

During installation of the Motion Control API (MCAPI) on a Windows 98 or Windows Me computer the installer may prompt the user multiple times with “Insert Disk” for the MCAPI98.SYS device driver. The multiple identical prompts can make it appear that the installation is broken.

## More Information

This is a known problem with Windows 98/Me. The INF file that installs the MCAPI device driver has plug-and-play entries for all of PMC’s motion control cards. Unfortunately, Windows 98/Me insists on prompting for the location of the MCAPI98.SYS file for each entry in the INF file that it finds during installation. Fortunately, the MCAPI installation program pre-loads the prompt dialog box with the correct path to the file in question so that the user merely has to click on the “OK” button to continue whenever the “Insert Disk” dialog appears.



This information is also included in the README.TXT file that accompanies the Motion Control API. Users should always check the README.TXT file for important information before installing any software or hardware.